



CLUB SPECIAL
EVENT

Alive!

Retire the Right Way



The Club, Retirees Association present an innovative expo for pre-retirees.

(PRE) RETIREMENT 2020 EXPO

FOR ACTIVELY WORKING
LOS ANGELES CITY EMPLOYEES



MARCH 19

THURSDAY 9:30 AM - 2 PM

Retirement on the horizon? Register for the first-ever **Pre-Retirees Expo**, sponsored by the Club and the RLACEI. Fun ... innovative ... free ... and *nothing* off the table.

For anyone thinking about retiring in the next five years to the recently retired, learn what you need to know to **retire the right way!**

Register Today!*

- GO TO PAGE 8

*Reserve your spot now. Space is limited.

Cheap Tickets. Insane Service. Affordable Insurance.



Employees Club of California
120 West 2nd Street
Los Angeles, CA 90012



Fun in the Snow!

Save up to **\$225** on lift tickets thru the Club!

For pricing and options, go to: employeesclub.com



METLAW

UNLIMITED ACCESS
TO LEGAL ASSISTANCE
WHEN YOU NEED IT*

OPEN ENROLLMENT FOR LOS ANGELES CITY EMPLOYEES

ENROLLMENT ENDS MARCH 21, 2020

CONTACT THE CLUB
FOR MORE DETAILS



(800) 464-0452
info@employeesclub.com

*When using a Network Attorney for a covered legal matter



JOHN'S BLOG

by John Hawkins, President and CEO, The Club

Getting Ahead by Planning Ahead

Are you five years away from retirement in the City? Are you ready for it?

Sure, you can go through the motions and sign the documents. But will you be ready ... *the right way*?

In talking to Club Members over the years – and I've talked to a lot of you -- the answer I get most often is, well, I'm not sure if I'm ready.

That's why we teamed up with our good friends at the RLACEI Retirees association to do something about it. The Club is here to serve our Members, so we made a bold decision to just go for it and produce a great event for pre-retirees.

Our very first Pre-Retirees Expo is set for March 19 at the Friendship Auditorium, and it's going to be awesome.

We've been working on the details since last fall. Our team of **Robert Larios, Cheryl Martin, Mary Ann Urdiales, Summy Lam, Noelle Kauffman**

and **Mariana Guevara** got to work. They reached out and partnered with the RLACEI's **Ruth Perry, Beverly Clark** and **Phil Orland**, and then things really got cooking. I can tell you it's going to be informative, free ... and *actually fun*. Imagine that!

All the information you need is in this month's issue, so register now (don't wait, at this writing we already have nearly 80 registrations). Be good to yourself. Be smart for your family. And get ready to retire *the right way*.

Moving on ... congratulations to **Andrew Virzi Jr.**, longtime Club Board Member who just retired from the DWP after more than 32 years. Congratulations, Andrew. Thanks for all you've done for the City and the Club ... Did you see the amazing rescue effort by the brave Firefighters at the LAFD? As I write this, I'm watching the squad going up lad-



The Club team putting together the Pre-Retirement Expo, clockwise from left: Mary Ann Urdiales, Noelle Kauffman, Cheryl Martin, Mariana Guevara and Summy Lam. Robert Larios is just out of frame on the right.

ders from below, and down cables from above to rescue the residents of the sixth floor of a tall apartment building on Wilshire. Just amazing ... Did you like our cover shot from last month, with the ITA Microwave Team, supervised by **Dave DiLullo**, Club Member? I'm still looking at it; that was one of the best cover photos ever by Club Director of Marketing Summy Lam ... and finally, we're in February, but there's still a final chance to submit your Valentines so we can post them online. Hard deadline is Feb. 7.

As we have plenty of snow in the rest of California, it's time to enjoy the great Club discounts on skiing that Mariana Guevara has arranged for us. Take advantage!

See you at the Expo March 19!

—JOHN

(PRE) RETIREMENT 2020 EXPO
FOR ACTIVELY WORKING LOS ANGELES CITY EMPLOYEES

Reset your debt

with our Simple1 Loan

Consolidate debt to a **Simple1 Loan** and enjoy the flexibility to:

- Pay down debt faster
- Have one monthly payment
- Simplify bill paying
- Improve your credit rating

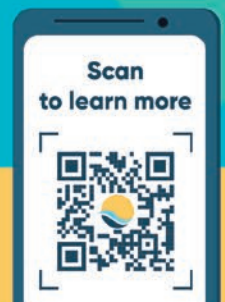


Rates as low as

8.99%
APR*
for 60 months

Get started!

Call our special hotline at **866-228-3829**,
click or visit a branch.



800-300-9728 wpccu.org @wpccu

Water and Power Community Credit Union



*APR = Annual Percentage Rate. Rate shown as of 01/01/20 is for a 12- to 60-month term and may change at any time. All credit union loans are subject to income verification and ability to pay. Your rate may be higher based on your credit score. Representative example: A \$15,000 Signature Loan financed at 8.99% APR for 60 months would result in 60 monthly payments of \$311.26. This loan may not be used to refinance existing WPCCU loans. WPCCU membership required.

IN THIS ISSUE

FOR ACTIVELY WORKING
LOS ANGELES CITY EMPLOYEES
MARCH 19

(PRE) RETIREMENT 2020 EXPO

LEARN HOW TO HAVE
A HAPPIER AND MORE
ENJOYABLE RETIREMENT!

— SEE PAGE 8



COVER STORY:

8-9 Retire the Right Way
For anyone thinking about retiring in the next five years to the recently retired, Club, RLACEI present first-ever Pre-Retirement Expo. **Sign up now!**

City of LA Coverage

Citywide
The City Parties: PART 2.....12

Harbor
Employees read to first-graders, give away teddy bears for Christmas.....5

The Club
Introducing the Club's newest, most awesome discount: a great deal on Bulls Bikes e-Bikes!5
Clubfest returns for exclusive party at Mulligan in Torrance...15

DWP
Ed Cuevas and Marcus Stein double their service as they become LAPD Reserve Officers.....6

Public Works
Street Services' Urban Forestry unit sets records for tree trimming.....7

Airports
Airport Police host Santa at LAX on Christmas morning.....12

LAFD
Chief Terrazas works the Christmas holiday at FS 20.15

Grown-up
**Coloring
Contest**



Entries due March 12

See Contest Art on page 14

Sections & Columns

Alive! Around the World6

Coloring Contest: Kids14

Deaths: In Memoriam13

John's Blog: From the CEO.....2

Larios in the City6

People We See4

Retirements13

United Agencies at the Club4

For Retirees: RLACEI.....Pages 10-11

**Get more *Alive!* news at
www.alive.employeesclub.com:**

Aquarium This Month Web

Claims Monthly Web

Classified Ads Web

Club Team and Counselors Web

Cooking Web

Discount Tickets! Web

Library Top 10 Web

Observatory This Month Web

Smart Move Web

Advertiser's Index

DWP Community Credit Union 2

United Agencies 12

Rosebud Marketing 6

NEW THIS MONTH

ONLINE

alive.employeesclub.com

**JOHN'S
Picture Perfect**
See great new winners this month!



People We See
Watch this month's interview at youtube.com/cityemployeesclub



Alive! Around the World
Read intrepid traveler Retired Capt. Michael Barnes' travelogue through Hawaii's Big Island.



*Be My Club
Valentine*

Send your loved one a special Valentine... to be published on web *Alive!* in February.

Send us a favorite photo (high-resolution digital file) of you and your loved one(s) (could be a romantic partner, a parent or child, etc.) and two or three sentences declaring your special bond.

Deadline: February 7

To send photos and your message, go to:
alive.employeesclub.com/valentines





Get a FREE Quote on Auto and Homeowners Insurance



Contact Your United Agencies Rep:
(888) 801-5522

Get a
FREE \$50 fuel card
when you sign up for a United Agencies policy!

This Month at the Club Store

120 West 2nd Street • Los Angeles, CA 90012

The United Agencies reps are appearing at the Club Store on select Thursdays:



Rosa Calderon
Personal Insurance Agent

Feb. 6: 10 a.m. – 4 p.m.



Lulu Cruz
Personal Insurance Agent

Feb. 20: 10 a.m. – 4 p.m.

The Club: Here to Help

Club staff is dedicated to helping our members receive the maximum benefit from their membership. If you have questions, concerns or suggestions about your Club, our counselors are ready to help.

Email us at:

help@employeesclub.com

if you have an event you want an event covered in *Alive!* or if you have questions about insurance.

Or call us at: (800) 464-0452

In-house Counselors

At Club Headquarters



MaryAnn Urdiales
Member Services Counselor
Ext. 159



Cheryl Martin
Member Services Counselor
Ext. 136

At the Club Store



Tiffany Sy
Member Services Counselor
Ext. 202

Feb. 2020 • Volume 19 – No. 2

Alive! is the official publication of the

Employees Club of California

120 West 2nd Street
Los Angeles, CA 90012

TELEPHONE: (800) 464-0452

CONTACT US: admin@aliveemployeesclub.com

Alive! (USPS P7960) is published monthly,

12 times per year by the Employees Club of California, 311 Spring St., Suite 1300, Los Angeles, CA 90013.

ALIVE! EDITORIAL OFFICES: 311 Spring Street, Suite 1300, Los Angeles CA, 90013 • (800) 464-0452

POSTAGE: Periodicals postage paid at Los Angeles, CA and at additional mailing offices.

SUBSCRIPTIONS: Annual subscription price for *Alive!* is included in the membership dues and is nondeductible.

POSTMASTER: Send address corrections to *Alive!*, Employees Club of California, 311 Spring St., Suite 1300, Los Angeles, CA 90013.

Alive! Staff

John Hawkins and Robert Larios,
Managing Editors

John Burnes, Editor

David Jamgotchian,
JJLA Associates,
Design and Production

LACEA Board

Terry Carter

Commanding Officer, Property Division, LAPD

Andrew Virzi III

Senior Utility Accountant, DWP

Capt. Danny C. Wu, LAFD

Employees Club Board

Marilyn Holley

Public Works: Bureau of Sanitation, Retired

Rose Hyland

Office of the Controller, Retired

Phillip Orland, Rec&Parks, Retired

David Muraoka, LAPD, Retired

Rita Robinson, County of LA, Retired

Andrew Virzi Jr., DWP, Retired

Alive! does not accept advertising from persons or organizations believed to be unreliable or financially irresponsible. *Alive!* is not responsible, however, for the performance of advertisers, the delivery or quality of their merchandise or services, or the legality of any particular program. Before making any purchasing decision, we recommend you consult additional sources as needed. Please contact the Club if you have any bad experiences with an advertiser. LACEA management reserves the right, at its sole discretion, to refuse any advertisement.

Who are the people you see every day?

People We See

Shelterless in Los Angeles.

No. 108
in a series.



Meet Terri Anderson

Lives in a broken-down RV. Wants to help people. Here's her story.

Age: 59.

Previous home: Western New York.

How long in LA: "Since last Tuesday." (Interview took place October 2019.)

Family life: "I have two daughters back home, and one daughter out here."

Living in an RV: "It's been really rough. My RV keeps breaking down. I don't have any way to charge my phone, and now my RV won't start. Yesterday, I was visiting my daughter, and I got a [parking] ticket. I don't have the money for that. I just want to go home."

Reason for moving to LA: "I wanted to help people because they show so much on TV back home [New York] that people are homeless and destitute and don't have anything. I thought I could come out here and make a difference. Now I'm finding out it's harder than anyone could ever imagine. I wanted to help people, and now I need help."

Growing up: "We would all go down in the middle of the summer and dig through [the town dump] to get toys. That's how we got toys. We never knew Mom and Dad were suffering."

Communication: "Communication is a huge thing for people who are down and out. I can't believe how hard it is to ask

[for help]. I'm not lowering myself to ask for help."

What if: "Some people are really desperate. I'm a little better off because I do have an RV to sleep in I'm out of the majority of elements. I saw there are people living in the woods, and I'm like, 'Oh my God. What happens if that ends up being me?'"

Favorite book: "I love D.C. Andrews books. They're about the hardships of rich people. I have like 68 books. I have some books by Stephen King, but they're so sick."

Making a living: "I used to trap animals. For six years I trapped muskrats and raccoons. That was quite the experience, checking your traps every single day in the middle of winter."

Hobby: "I'm an avid rock collector."

Make a wish: "This is a life of hardship. I just want to go home."

Advice for everyday people: "Stay good to yourself. Try desperately to be a good person. Pick up your boots and get back on the horse."

There's a lot more to this interview online at:

youtube.com/cityemployeesclub

The interview, conducted by guest interviewer Shawn Dworkin, took place October 2019 near the Northridge Recreation Center.



Guest interviewer Shawn Dworkin (left) with Terri Anderson.

See this interview ON



The Club posts our "People We See" video interviews online. See them on the Club's YouTube channel:

youtube.com/cityemployeesclub

In this feature, the Club introduces you to people you see every day, but you might not know who they are. The Club reminds you that we all have names and stories to tell.

HARBOR

Story and photo courtesy Harbor

Teddy Bears for Christmas

Harbor delivers gifts to nearby students for Christmas.

On Dec. 11-12, Harbor employees including Port Police Officers reached out to neighboring students for an early Christmas.

Each year, Port employees participate in Operation Teddy Bear – this year visiting 15th Street Elementary School in San Pedro and Hawaiian Avenue Elementary School in Wilmington. Employees read to first-grade students to help demonstrate the importance of volunteering and kindness, and distribute teddy bear gifts.

It's a beautiful gesture, Port employees!



Teddy bears for Christmas, courtesy Harbor.



Port Police Officers get ready to give away teddy bears to first-graders.



Los Angeles Harbor Commissioner Anthony Pirozzi Jr. reads to first-graders as part of the Harbor's Operation Teddy Bear.

FOR ACTIVELY WORKING LOS ANGELES CITY EMPLOYEES

(PRE) RETIREMENT 2020 EXPO

LEARN HOW TO HAVE A HAPPIER AND MORE ENJOYABLE RETIREMENT!

MARCH 19

SEE PAGE 8

Introducing **Bulls Bikes**

THE CLUB



World leader in e-Bikes strong enough for the LAPD are now available to Club Members at an awesome discount!

The LAPD's e-Bike unit has been using world-leading Bulls Bikes since 2018. The Bulls Bikes are *that* good. And now you can buy your own at an amazing discount ... thanks to the Club!

The Club has partnered with Bulls Bikes USA to offer 14 percent discounts to Club Members. Email the Club at BullsBikes@employeesclub.com to receive your personal discount code. The discount is exclusively for Club Members.

Bulls Bikes is one of the largest e-Bike companies in Europe and is based in Germany. The LAPD has been using them for its e-Bike patrols since 2018.

Electric bikes make pedaling easier and bike riding more fun. With powerful motors, extended battery life, powerful brake discs and comfortable suspensions, Bulls e-Bikes open up whole new worlds to explore!

Take advantage of Club purchasing power and discounts when you purchase this live-changing e-Bike.

For more information on Bulls Bikes, go to:

employeesclub.com/bullsbikes



Here's Club CEO John Hawkins demonstrating the power of Bulls Bikes:

<https://employeesclub.wistia.com/medias/0s0zmjvihu>

Larios in the City

BY ROBERT LARIOS, Chief Operating Officer

Robert Larios, the Club's Chief Operating Officer, honors Club members with the coveted Club Retirement Plaque.



Andrew Virzi with the Club COO Robert Larios (above) and CEO John Hawkins (below).



Andrew Verzi, Jr.
DWP, Retired after 32 years of service in the City of Los Angeles.

Congratulations!



Leslie Allen
LAPD, Retired after 34 years of service in the City of Los Angeles.

Larios in the City is also available on the *Alive!* website for viewing and sharing:
alive.employeesclub.com/lariosinthecity

Limited Edition Performing Arts presents

BOOKSHELF

the play

Saturday,
February 22, 2020
3pm (Doors open at 2pm)

FOR TICKETS:
Email LEPA.ARTS@gmail.com
Text (323) 365-4736
Go to lewsic.com
\$20 in advance, \$25 at the door

Bristol Civic Auditorium
16600 Center Drive, Bellflower

Produced by Lady Y. Smith
Featuring Georgi McKinney, QueJonné Smith, Gigi Renfro with Deborah McMiller, Charisma Polk, David W. Cross II, Patricia Brown, Bre Heard, and more.

**Promoting an Event?
Need give away items?
for.....**

**Fund Raisers
Awards, door prizes
Meetings**

800.426.0174
rosebud@getpromos.com

"if you can imagine it, we can create it."

**ROSEBUD
Marketing Group**

www.RosebudMarketing.com

We can print your name or logo on anything including the following:
Coffee Mugs, Pens, Watches, Clocks, T-Shirts, Magnets, Key Tags, Awards, Baseball Caps, Golf Items, Mouse Pads and More!

DWP



From left: Ed Cuevas and Marcus Stein double up their City service.

Twice a Citizen (Times Two!)

Ed Cuevas, Environmental Engineering Associate, DWP, 5 years of City service, and Marcus Stein, Water Service Supervisor, DWP, 15 years of City service, have decided to double their City service. In addition to their work for the DWP, they have become sworn LAPD Reserve Police Officers. (Both are Club Members, too.)

Congratulations!

Alive! AROUND THE WORLD

Capt. Barnes Goes to Hawaii!

Intrepid Club traveler **Capt. Michael Barnes, Retired, Harbor**, takes us to the mountains ... and pubs ... of Hawaii. Check out all the photos and travelogue at *Alive!* on the Web.



Capt. Michael Barnes, continues his adventures to the Island of Hawaii and Hilo, the last of the nearly tourist-free towns.

Hilo is one of the last small towns that has not been totally ruined by the tourist industry. Located on the biggest Hawaiian island in the chain, it still has a very active volcano called Kilauea, which according to the local indigenous people is the home to the goddess Pele. The last eruption was in 2018, when the molten lava flowed into the sea at Kapoho Bay, filling in the tidepools and destroying hundreds of homes. This is now a very strange place to visit as it's like walking on the moon with

the black hardened lava everywhere. The local people have created little shrines and paintings on the lava field to ward off evil spirits and mark where someone once lived.

For this trip we decided to base ourselves in an Airbnb above a colorful clothing store in the heart of Hilo, close to all the action. Just across the street from our apartment was this very basic and interesting kava bar. Being on the adventurous side we decided to pay them a visit and check out their kava products. The bar is a throwback to the days of the hippy generation, with patrons to match, with hair and personal odors. Every now and again there is a band playing Hawaiian-type reggae music, with musicians as colorful as the patrons. The

bar offers all kinds of flavors to add to kava to make it more palatable, but I think it still tastes like muddy water. The kava plant itself is called *piper methysticum* and is part of the pepper plant family. It is used as herbal medicine in many Polynesian cultures. The root of the plant is used to produce a drink with sedative, anesthetic, and euphoriant properties, and moderate consumption of it will help you with some short-term anxiety problems. Long-term drinking will give you liver problems. All I can say is on a warm Hawaiian evening sitting outside in the candlelight, sipping coconut water flavored kava, is a very mellow experience to say the least...

duce a drink with sedative, anesthetic, and euphoriant properties, and moderate consumption of it will help you with some short-term anxiety problems. Long-term drinking will give you liver problems. All I can say is on a warm Hawaiian evening sitting outside in the candlelight, sipping coconut water flavored kava, is a very mellow experience to say the least...

Continued on the web
alive.employeesclub.com



Take *Alive!* with you, wherever you go!

- Bring your recent copy of *Alive!* with you when you travel.
- Snap a **high resolution** photo of you **holding *Alive!***
- Go to: alive.employeesclub.com and click "SEND TO ALIVE!" in the menu. You'll find a convenient online form to send your text and pics for publication.

Be My CLUB Valentine

CLUB MEMBERS: Send your loved one a special Valentine... to be published on web Alive! in February.

Here's how it works:
Send us a favorite photo (high-resolution digital preferred) of you and your loved one(s) (could be a romantic partner, a parent or child, etc.) and two or three sentences declaring your special bond.

Deadline: February 7
To send digital photos and your message:
Go to alive.employeesclub.com/valentines

Photos by Alive! and courtesy Public Works

PUBLIC WORKS

Urban Forestry trims 20,000th tree since July 1.

Over the Jan. 11-12 weekend, Public Works/Street Services' Urban Forestry unit trimmed its 20,000th tree since the July 1 start of the fiscal year, with 13,000 to go before the end of the fiscal year June 30. The goal is to trim 33,000 this year.

Street Services reported that on Jan. 13, Urban Forestry had 21 aerial towers working

across the City of Los Angeles. Due to the steady growth in Urban Forestry staffing and equipment, staff believes it might have been the biggest day of tree trimming in a decade.

Alive! featured the Urban Forestry tree trimmers in our January 2019 issue. Here are some photos from that story.



Tree trimming, from the Alive! story in January 2019.

INSURANCE FROM THE CLUB

Long-Term Disability Insurance Is the Most Important Product You Can Get at the Club

Get it today. Here's why:

- Protect your monthly income! You never know what might happen to you.
- How would you pay your bills if you couldn't work?
- City and DWP employees have limited sick time or salary continuation and no State Disability Insurance (SDI). The Club's Long-Term Disability Insurance is more than an option - it's vital.

To learn more about your insurance options, schedule a visit with the Club's insurance experts:

			Phone appointments and walk-ins available.
Cheryl Martin Member Services Counselor cmartin@employeesclub.com Ext. 136	Tiffany Sy Member Services Counselor tsy@employeesclub.com Ext. 202	MaryAnn Urdiales Member Services Counselor murdiales@employeesclub.com Ext. 159	
(800) 464-0452			

LACEA Insurance Services, Inc. ('Employees Club of California') is a licensed insurance agency offering insurance benefits to qualified Club members. The Club's CA DOI Lic. is #0B98000.

(PRE) RETIREMENT

FOR ACTIVELY WORKING LOS ANGELES CITY EMPLOYEES

Retire the Right Way!

Club, Retirees Association present an innovative expo for pre-retirees.

For anyone thinking about retiring in the next five years to the recently retired, this event is for you! The Club and the RLACEI (Retired Los Angeles City Employees, Inc.) are hosting the first of its kind – an innovative expo focusing not just on forms and schedules, but *how* to retire the right way.

This informative – and *fun!* – expo will include seminars, presentations and workshops by life experts and retirement advisers. Topics will include retirement strategies and asset protection.

Read all about it in this month's *Alive!* feature.

Produced by the Employees Club of California and the Retired Los Angeles City Employees, Inc. (RLACEI)



(PRE) RETIREMENT 2020 EXPO

FOR ACTIVELY WORKING LOS ANGELES CITY EMPLOYEES

Schedule

MARCH 19

Speakers and topics subject to change.

MORNING

- 9:30 – 10 Registrant Check-In
- 10 – 10:20 Welcome from the Employees Club and RLACEI
- 10:20 – 10:40 **Presentation on Aging**
Laura Trejo, General Manager, City of Los Angeles, Department on Aging
- 10:40 – 11 **Presentation on Aging**
Lorenza C. Sanchez, Assistant Director Los Angeles County Aging and Community Services
- 11 – 11:30 **Legal Considerations**
Janet Morris, Esq., JSA Consultants

11:40 – 12:30 Lunch (FREE), Vendor Tables

AFTERNOON

- 12:30 – 12:50 **Long-Term Care**
Cheryl Martin, Employees Club
- 12:50 – 1:10 **Deferred Compensation**
Presenter to be announced.
- 1:10 – 1:30 **Financial Considerations**
Presenter from Foresters Financial to be announced.
- 1:30 – 1:50 **LAFCU and Travel Agency Presentation**
- 1:50 – 2 Closing, Raffles
- All Day Member Assistance from Mom's Computers

Exhibitors

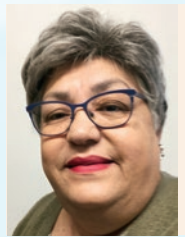
Enjoy access to a number of great vendors, with more to come! (Ask about the Bingo Card!)

- ▶ Bull's Bikes
- ▶ Costco
- ▶ Employees Club
- ▶ Foresters Financial
- ▶ JSA Consultants
- ▶ Los Angeles Federal Credit Union (LAFCU)
- ▶ Los Angeles City Deferred Compensation
- ▶ Los Angeles City Department on Aging
- ▶ Los Angeles City Employees Retirement System (LACERS)
- ▶ Los Angeles County Aging and Community Services
- ▶ Mom's Computers
- ▶ Montrose Travel
- ▶ Retired Los Angeles City Employees, Inc. (RLACEI)
- ▶ Sprint

2020 EXPO

▶ Speaker Spotlight

Laura Trejo, MSG, MPA, General Manager, LA Dept. of Aging



Laura Trejo, the City's foremost expert on aging, was the first Latina appointed to General Manager in the City of Los Angeles. She is responsible for the overall administration of the LA Dept. of Aging, serving one of the largest and most diverse concentrations of older people in the United States. She serves as a technical and policy adviser to the mayor and City Council and represents the City of Los Angeles before the public, community, and private groups on matters affecting senior citizen affairs. She is the City's lead for Purposeful Aging Los Angeles, an age-friendly initiative to make the Los Angeles region the most age friendly in the world.

In her previous post, Ms. Trejo served as the first District Chief for older adult mental health for Los Angeles County. Laura is a gerontologist with a Master of science in gerontology, Master of public administration, and a graduate certificate in Long Term Care Administration, all from the University of Southern California.

Los Angeles magazine named her among the "50 Most Influential Women" in the United States.

Janet Morris, JSA Consultants



Janet R. Morris, Esq. has practiced in elder law for the past 33 years. She was formerly the director of the Family Caregiver Project at Bet Tzedek Legal Services. She has her own elder law practice, where she finds solutions to family crises involving long-term care. Janet serves on numerous local and statewide committees and as technical adviser to many projects concerning the legal rights of elderly and incapacitated individuals. She has co-authored numerous articles and publications, including the "Caregiver Companion," and has delivered hundreds of speeches in both English and Spanish.

Janet has received awards from AARP, KCET, the Skirball Foundation, MAPS Charities and the California Council for Gerontology and Geriatrics for her professional contributions in this area. She serves on the Alzheimer's Los Angeles public policy and program committees and on the Board of Directors of MAPS Charities. Janet received her Bachelor's degree from the University of California, Berkeley, and her law degree from the University of San Francisco. www.janetmorrislaw.com

Cheryl Martin, Club Counselor, Long-Term Care Insurance Expert



The Club's own Cheryl Martin, one of the best-known Club employees, is the Club's expert on Long-Term Care insurance. She's never been featured at a retirement event until now; attendees to the Expo will benefit from her expertise and wisdom. Cheryl has worked with City Employees through the Club for more than seven years. She has helped many hundreds of Club Members gain a more secure future by obtaining Long-Term Care insurance.

Cheryl grew up in New Orleans; her mother worked at a nursing facility for more than 45 years. Cheryl worked with her for 7 of those years. There, she saw why Long-Term Care insurance is so important.

"We're all living longer," she says. "It's so important that someone is able to take care of you in your home. Long-Term Care insurance helps make that possible. "I love people in general," she continues. "I saw the downside of aging in the senior center – nobody wants to be a burden. So it's my passion to educate people in protecting their income and taking care of their future."

INAUGURAL

(PRE) RETIREMENT 2020 EXPO

FOR ACTIVELY WORKING LOS ANGELES CITY EMPLOYEES

Thursday,
March 19
9:30 AM – 2 PM

Friendship Auditorium
3201 Riverside Dr.
Los Angeles, CA 90027
(near Griffith Park)

- ▶ Presentations
- ▶ Vendors
- ▶ Raffles

Win Prizes!

FREE LUNCH
PARKING
ADMISSION

Reservations Required:

EMAIL: info@employeesclub.com

CALL OR TEXT: (213) 425-2035

The *Alive!* Interview

'A Purposeful Life, a Purposeful Retirement'

The team putting together the upcoming inaugural Pre-Retirement Expo talks about why it's so important, and how they see it as becoming a major annual event. The team includes: Ruth Perry, President and Membership Director, Beverly Clark, Vice President and Publicity Director, and Phil Orland, Health Director, RLACEI; and Club staff Robert Larios, COO; Summy Lam, Director of Marketing; Cheryl Martin and Mary Ann Urdiales, Club Counselors; Noelle Kauffman, Member Services Manager; and Mariana Guevara, Tickets and Benefits Procurement Manager.



The team putting together the Pre-Retirement Expo

Mary Ann Urdiales, Club

Beverly Clark, Phil Orland, Ruth Perry, RLACEI

Noelle Kauffman, Club

Robert Larios, Club

Mariana Guevara and Summy Lam, Club

Q: What is the Pre-Retirement Expo all about?

Ruth Perry: To promote awareness of and remove some of the phobias about preparing for retirement. It's never too early to begin preparing to better ensure financially secure and fulfilling retirement years.

Beverly Clark: The Expo is a collaboration between the Club and RLACEI to host a seminar for City employees who anticipate retiring within the next few years. The Expo will focus on preparing soon-to-be Retirees for retirement by providing financial advice and procedures to take in preparation for retirement.

Summy Lam: The Pre-Retirement Expo is about providing our Members an opportunity to have a happier and more enjoyable retirement.

Noelle Kauffman: It's going to be a fun event for Members to learn everything there is to know about retirement so that our Members feel confident about the process and the transition is as smooth as possible.

Q: How excited are you about the Expo?

Ruth: What can be more exciting than preparing for your retirement years? This is what we have worked for all our lives. Now it's time to reduce the work stress and the commute time and begin spending more time with family, taking care of ourselves, traveling, and doing all the things we've never had time to do before.

Beverly: It is absolutely an exciting event for both Retirees and soon-to-be Retirees. The Expo has planned a very energetic agenda with topics and speakers that will be very helpful and informative to all attendees. We want attendees to leave looking forward to their retirement years as being the "the best years!"

Summy: This will be an epic event filled with food, fun, education, and camaraderie among Los Angeles City Employees.

Noelle: Yes, many vendors and outlets for Members to experience plus lunch – always a bonus!

Q: What do you hope attendees learn?

Ruth: All attendees will leave being more aware that their retirement years can potentially be the most financially secure and fulfilling years of their lives. A purposeful life should translate into a purposeful retirement, and both RLACEI and the Employees Club want to deliver that exciting message to all City employees.

Beverly: Our goal is to prepare attendees for retirement by providing information and awareness. Attendees should leave with a plan for their life after City employment.

Summy: All City Employees will retire at some point in their careers. Whether they are with the City of Los Angeles or with another company, they will certainly want to find ways to maximize their income and save on daily expenses such as dining, entertainment, travel and shopping. The Club will be there for you today and tomorrow to help you save money and enjoy a happier retirement.

Q: How did this start? How did the team develop the Expo?

Ruth: In our goal to provide our potential new Members the best possible information regarding what RLACEI stands for, we felt it was important for them to know that planning for retirement is more than just about filling out paperwork. Issues like financial stability, the right frame of mind, the current and future needs of our families, and much more can make a significant impact on our decision to retire. Obtaining relevant information, educating oneself and knowing when the best time to retire is can make all the difference in our ability to enjoy our retirement years.

Summy: There aren't many retirement events that Los Angeles City Employees can attend to get assistance on comprehensive retirement strategies. There are certainly not many events, if any, that will promote a "fun factor" for life after retirement.

Continued on Web *Alive!*
Go to: alive.employeesclub.com



Retired Los Angeles City Employees, Inc.

RLACEI

For Retired Club Members

CONTACT INFORMATION

Retired Los Angeles City Employees, Inc. (RLACEI)

Ruth B. Perry, President
Terminal Annex
P.O. Box 86264
Los Angeles, CA 90086
PHONE: (800) 678-4145, ext. 717
EMAIL: Ruth.Perry@RLACEI.org
ON THE WEB: www.RLACEI.org



2020 Executive Board of Directors

Ruth B. Perry, President
Beverly J. Clark, First Vice President
Phil Orland, Second Vice President
Harold Danowitz, Secretary/Treasurer

RLACEI DIRECTORS

Dial (800) 678-4145 plus extension

Cliff Cannon, Audit Director, Ext. 715

Beverly J. Clark, Publicity Director, Ext. 716

Hal Danowitz, Secretary/Treasurer, Ext. 707

Dennis Harding, Entertainment Director, Ext. 704

Ed Harding, President Emeritus, Ext. 703

Michael Karsch, Legislative Representative, Ext. 706

Tom Moutes, Director, Ext. 708

Phil Orland, Golf Director, Ext. 709

Ruth B. Perry, Membership Director, Ext. 717

Neil Ricci, Director, Ext. 714

RLACEI RETIREE HELPLINE:

(800) 678-4145, Ext. 0

For retirement assistance, call the Retiree Hotline and leave a message. A Director of RLACEI will return your call and assist you with your concerns.

RLACEI WEBSITE

Visit the RLACEI website www.RLACEI.org to find the latest retirement news. Call (800) 678-4145 Ext. 0 to make suggestions.
EMAIL: Contact@RLACEI.org

MAILING ADDRESS:

Retired Los Angeles City Employees Inc.
Terminal Annex
P.O. Box 86264
Los Angeles, CA 90086

or

Retired Los Angeles City Employees Inc.
1100 S. Flower Street, Suite 3300
Los Angeles, CA 90015

Change of Address?

Please notify Ruth B. Perry, Membership Chair, at (800) 678-4145 ext. 717 or Ruth.Perry@RLACEI.org for a change of address or to add or change your email address. Also notify LACERS, ACEBSA, LAPCU, and LAFUCU as applicable.

Send in your Interesting



Contact **Beverly J. Clark**, Publicity Director
Email: Beverly.Clark@RLACEI.org or
Phone: (800) 678-4145 ext 716

2020 RETIREE EVENTS

RLACEI event dates for 2020 coming soon!

RESERVATION LINE:

RLACEI: (800) 678-4145, Ext. 701



Mary Beetz

Goodbye, Mary!

Mary Beetz retires from the RLACEI Board.

The RLACEI Board wishes outgoing Board Director Mary Beetz a fond farewell and thanks her for her

many years of service on the Board and to Retired City employees. Mary served on various committees including Publicity, Entertainment and Golf. She provided invaluable service and knowledge to the Board.

The Board wishes her all the best!

MEMBERSHIP DUES: An Update

Effective Jan. 1, 2019, RLACEI membership dues are now \$3 per month. This new fee includes free membership to the Employees Club of California for all RLACEI members. RLACEI members who carry insurance products with the Club soon will receive a reduction in their payroll contributions for the Club membership.

LACERS and the Club are working to process the appropriate reduction for all applicable RLACEI members. RLACEI has been informed that the correct deduction should be reflected on your payroll statement in the next few months. All RLACEI members will be reimbursed for Club dues deducted from January through the effective date of the correct payroll processing.

Please contact Membership Director Ruth Perry at (800) 678-4145 ext. 717, should you have any questions.



Tom Moutes

Important Health Benefit Cutbacks? Not So Fast!

Health Benefits Update By Tom Moutes

What would you do if you lost your Retiree health care benefits? Retirees in many other pension systems have seen their retiree healthcare benefits cut back or eliminated altogether. The *Dayton Daily News* recently reported that the Ohio Public Employees Retirement System is considering reducing its retiree healthcare from the current range of \$225 to \$405 to \$178 to \$315 per month. (LACERS subsidies tend to be much higher than this.)

When public employee retiree healthcare cuts are made and those cuts are litigated, the courts frequently look to the source of the benefit promise, if any. Sometimes, those "promises" amount to nothing more than a longstanding practice or a verbal agreement. In those cases, the benefit cuts are more likely to be upheld by the courts.

As LACERS Retirees, we are very fortunate that the benefit promises for our healthcare benefits are laid out in great detail in the City's Administrative Code. The ordinance containing our benefit promises was voted for by the City Council and signed by the mayor. The fact that our Retiree healthcare benefits are in such a formal document as the Administrative Code makes it much more difficult for any proposed cutbacks to occur or be upheld by courts.

This is just one reason we are fortunate to be LACERS Retirees! ■



Michael Karsch

Management of Pension Funds Affects the U.S. Economy

LEGISLATIVE REPORT: Pension Law and Policy, By Michael Karsch

Many of you may have seen the recently released film *The Irishman*, the three-and-a-half-hour movie directed by Martin Scorsese. The film is about the life of Jimmy Hoffa and union politics. Of relevance to us is the importance of pension funding and control. Hoffa was a member of the Teamsters union and eager to climb up the ladder of the union. After he became the head of the union, he and others maneuvered for control over their pension fund, "using it for mafia-related loans and personal gain," according to the *Dailysignal.com*. "In fact, it was fraud and conspiracy related to the union's pension fund that landed Hoffa in prison, and after that, the Teamsters' pension fund was under federal oversight for decades." Not all union pension plans are hurt by allegedly illegal activities, but alleged mismanagement has been a problem.

Congress is now considering how to fund the multi-employer pension systems in the private sector. According to *Dailysignal.com*, 1,400 such plans have set aside only 43 cents on the dollar to pay for these pension payouts. This does not affect pensions for the public sector, but some public pension systems are facing the same problem of not setting aside sufficient revenue to cover obligations.

Interest-rate changes in the marketplace have serious consequences. They impact us in how much we have to pay when borrowing money, or in our pension plan's need to cover for future payouts. The impact of such rates in pension funding are seen in the capital market for U.S. municipal bonds, which is where many government bodies go to borrow for credit cushions to their upcoming obligations. The market performs by having expectations built in to bond prices; if you want to buy bonds to cover your future, you pay a premium

for the bond. "Bondholders, wary of how a default could play out, demand a premium." (Review.chicagobooth.edu) "Unfunded pensions cost U.S. states more than \$2 billion in lost bond-issuance proceeds in 2016." The writer also commented that the larger effect on bonds with longer maturities (stretching out the long term of bonded indebtedness to fully cover a pensioner's lifespan) of 10 to 20 years means a considerable, longer impact and higher cost.

A year-end review of 2019 and outlook for the future in the *Wall Street Journal* (Jan. 2, 2020) mentions "Japan's Lost 30 Years Give Pause to Those Looking at the U.S." The Nikkei Index has been flat (yes, flat means barely any growth) after peaking at the end of 1989, starkly in contrast to U.S. shares. While the U.S. still looks good in contrast, the U.S. has falling interest rates, may have slower growth and an aging population, which "look a lot like Tokyo." Again I draw attention to the role of interest rates in an economy. Low interest rates help all of us to finance a new home and we like that, but at the same time lower rates hit hard at the savings rate in a country. A former bond fund manager (Bill Gross) is quoted: "Artificially low interest rates destroy the savings function so necessary for capital to be invested in the real economy. Pension funds, insurance companies and any financed-based structure with long liabilities are slowly being strangled because they cannot earn their assumed return." It should also be noted that the billions of dollars that are invested by pension funds have significant sectors of investment types that are strongly affected by low interest rates. An increase may lead to inflation if it goes too far, but the desirable "middle" compromise is always a challenge to reach. Ask the Federal Reserve Board. ■

RLACEI

Are you an RLACEI Member?



Members of the Retired Los Angeles City Employees, Inc. are invited to attend all RLACEI events, such as the annual member picnic and holiday party.

Check your pension statement for the "Retired LACEI" \$3 monthly deduction. If it's there, you are an RLACEI member!

If not a member, call (800) 678-4145 x717 or visit our website at RLACEI.ORG and join today! Don't miss out on RLACEI events!



Election of Retiree Board Member Coming Soon

LACERS Board Update
By Michael R. Wilkinson

Michael R. Wilkinson

It's that time again. No, not the time to clean your gutters or join a gym. It's almost time for another election of the LACERS Board of Administration's retired member seat. I am honored to have served in this post as your representative since 2013 and now as Board Vice President.

The reason that this election should matter to you is that you need an advocate keeping the plan financially strong and with an independent voice representing you as Retirees.

The mayor appoints three members on the Board – active members get two and Retired members only get one. So make it count.

Important decisions for running the pension plan should be made with a very long-term horizon. Decisions should not be made on what is best for the short-term needs of City politics.

As your elected Board member, I am always looking for ways to protect our plan and keep us out of investments that are high risk and do not provide the long-term risk-adjusted return needed to sustain our plan.

Risk-adjusted return simply means that the investment return should be measured against the risk that the investment will go down in some markets. So, if you have an investment that might provide a 20 percent positive return in a good market, you should measure that against the possibility that may go down significantly in a down market. If the risk-adjusted return is significantly positive, it is worth considering the investment. Of course, there are many other questions that must be answered before an investment is made.

Finally, I am strongly in favor of fully funding the LACERS plan. Across the country, some of the plans that are in the worst shape financially share one problem – a failure of the employer to properly fund the plan. I am proud to say that the City of LA has always paid 100 percent of the full employer's contribution as determined by LACERS. ■



Meet and Greet



From left: Ruth Perry, RLACEI President; Mayor's Representative Sally Castro; and Beverly Clark, RLACEI Vice President.

RLACEI Board takes tour to say hello to City leadership.

On Dec. 18, RLACEI Board members Ruth Perry, President; Phil Orland; Director; and Beverly Clark, First Vice President and Publicity Director, visited the Mayor's Office, Councilmembers and LACERS. They provided holiday cheer and goodies.

Read Alive! on the Web!



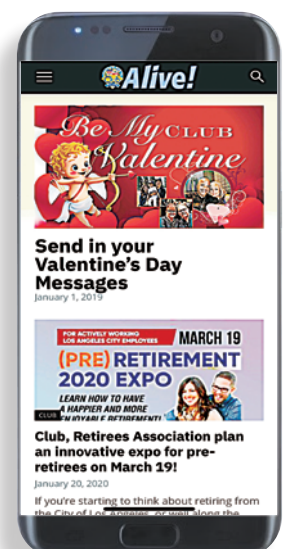
alive.employeesclub.com

Alive! is now its own Website ... and a streamlined paper!

Yes! *Alive!* is now a great new Website ... and a streamlined, more portable version of the paper you've come to know and love, delivered to your door!

They are companions, working together to deliver a great Club benefit, unmatched in California or anywhere – awesome, streamlined content in a smaller newspaper, especially for Retirees ... and lots of features and fresh content on the new Website for everybody:

- all the news and content, in full
- sharable
- video
- more photos
- more City stories
- more instant!



Alive! in print and online: another great Club benefit!

Board Has Vacancy, Seeks New Director

The RLACEI Board of Directors is looking for members to serve on the Board. The Board ensures that our retirement benefits are protected.

Qualifications:

- Retired City Employee
- Enjoy Working to improve and maintain City Benefits
- Want to make a difference
- Enjoy being involved

Please email Beverly Clark at Beverly.Clark@RLACEI.org or leave a message at (800) 678-4145, ext. 716.

RETIREES



Show Us Your Grandkids!

Here's how:

1. **Make sure to have the permission from their parents.** If you send in a photo, *Alive!* assumes you have already received that permission.
2. Photos with you in them are better, but if not,
3. List names of your grandkids.
4. In a sentence or two, tell us about them – their school, accomplishments, what they love to do, how proud you are of them, etc.

TO SUBMIT, GO TO: alive.employeesclub.com and click on **Send To Alive!**

Story and photos courtesy Sgt. Rob Pedregon and Officer Jay Kim, Airport Police

AIRPORT POLICE

Santa Visits LAX

Santa, hosted by Airport Police, greets Christmas morning passengers at LAX.

On Christmas morning at LAX, Airport Police and Santa Claus walked the second busiest airport in the nation, greeting passengers, posing with travelers and employees while handing out teddy bears, candy canes and ornaments to children traveling on the special day.

It marked the fifth year that Santa Claus, who resembled Steve Van Noord, spent his Christmas morning walking with Airport Police handing out stuffed animals. *Alive!* chronicled the Airport Police's annual Christmas giveaway in December.



Airport Police at LAX on Christmas morning 2019.



100 N. 1ST St., Ste. 301, Burbank, CA 91502
877-801-5522 CA License #0252636

Club Members! Save on your Auto Insurance!

(888) 801-5522

DIRECT LINE FOR CLUB MEMBERS



Home and Auto Insurance Services provided for members of the **CITY EMPLOYEES CLUB**



We also have great rates on Homes, Boats, Motorcycles, RV's, Rental Properties and Apartment Buildings.

A FREE Benefit to members of the City Employees Club of Los Angeles

These insurance products are brought to you by the Club's Partner, United Agencies, Inc. CA Lic. # 0252636 United Agencies represents Mercury Insurance Group, as well as Chubb Insurance, Hartford, Fireman's Fund, Progressive, Civil Service Employees Insurance, Allied, Safeco, Travelers, Unigard and Encompass.

The City Parties!

All across the City, you celebrated the holidays. And *Alive!* was there! Here's just a sampling of the fun that was had.

- DWP Contract Operations/Lincoln Heights
- DWP Metro
- Economic/Workforce Dev.
- Harbor Employees Club
- PW Sanitation Recycling Unit

More Pictures on the web
alive.employeesclub.com

DWP Contract Operations/Lincoln Heights



DWP Metro



Economic/Workforce Dev.



Harbor Employees Club





Life's Important Moments

Share Your Life's Moments Submit digital photos and text online:
alive.employeesclub.com/lifes-important-moments

Retirements

Here's a listing of all those who retired from the City this month. To all we say, welcome to the Best Years!

NAME	TITLE	DEPT.	YEARS	NAME	TITLE	DEPT.	YEARS
Banelos, Joyce	Bkgrd Investigator	Personnel	26	Ramirez, Mary Helen	Sr. Admin. Clerk	LAPD	19
Beaulieu, Kenneth	Mgmt. Analyst	Airports	21	Salyer, Gregory	Power Op.	DWP	N/D
Bowin, Claire	Sr. City Planner	Planning	15	Santoyo, Alfonso	Fleet Services	DWP	N/D
Cadoret, Melvyn C.	Street Svcs. Supv.	Public Works	30	Scarin, Thomas	Pr, Constr. Insp.	Airports	20
Chang, Winston K.	Warehouse/T/R Wkr.	Gen. Services	23	Scottini, Lawrence E.	Officer	Airports	8
Cortina, Mario	Gardener Caretaker	Rec & Parks	31	Sedwick Griffin, Karen	Sr. Admin. Clerk	LAPD	31
Coronado, Marta	Customer Service	DWP	N/D	Smith, David Alan	Helicopter Mech. Supv.	Gen. Services	30
Davis, Donald	Energy Dist.	DWP	N/D	Somadhi, Devindra	Heavy Duty Truck Op.	Public Works	30
Doherty, Brian B.	Trans. Engin. Aide	Transportation	41	Staggers, Rhoda C.	Sr. Admin. Clerk	LAPD	43
Dominguez, Celia N.	Messenger Clerk	Library	8	Stewart, Flora F.	Manag. Analyst	Housing	22
Early, Michael	Traffic Officer	Transportation	29	Strafford, Joseph	Power Trans.	DWP	N/D
Enriquez, Irene A.	Sr. Admin. Clerk	Zoo	30	Sutton, Hermean S.	Admin. Clerk	Econ./Wrkfrc Dev.	36
Flores, Adrian	Power Reg.	DWP	N/D	Villalobos, Gerardo	Custodian	Gen. Services	19
Freeman, Michael C.	Security Officer	Airports	12	Ware Logan, Lori	Laboratory Tech	Public Works	29
Gibson, Thomas	Landscape Arch.	Rec and Parks	18	Wells, Narvia M.	Director	Personnel	33
Gomez, Arturo	Sr. Recreation Dir.	Rec and Parks	33	Williams, Kenneth	Customer Svcs.	DWP	N/D
Hansen, Janet	Sr. City Planner	Planning	18	Williams, Leonard J.	Security Officer	LAPD	13
Hospe, Pauline Kay	Sr. Admin. Clerk	Harbor	34				
Howard, La T	Customer Billing	DWP	N/D				
Johnson, Haywood O.	Traffic Officer	Transportation	32				
Lee, Ioannice Maria	Water Microbiologist	Public Works	30				
Leveque, Thomas J.	Maintenance Sup.	Rec and Parks	31				
Leyva, Jesus N.	Safety Engineer	Bldg. & Safety	13				
Louie, Raymond	Sr. Admin. Clerk	LAPD	30				
Macias, Emilio	Architectural Ass.	Harbor	35				
Mack, Anthony	Int. Support Sys.	DWP	N/D				
Owens, David E.	Refuse Coll. Truck Op.	Public Works	30				
Oyakawa, Robert K.	Landscape Arch.	Rec and Parks	34				
Peterson, Robert E.	Power Shovel Op.	Public Works	35				
Pichardo, Beverly D.	Clerical Assistant	Library	9				
Pires, Peter L.	Park Services Att.	Rec and Parks	29				
Price, Rex E.	Maint. & Constr. Hlpr.	Airports	18				

N/D = not disclosed



Share Your Life's Moments

Share your news... and send in a photo! Have you gotten married? Had a baby? Graduated? Is a family member in the military? Send in a photo and a paragraph, telling us the details. We love to share your good news.

Submit digital photos and text online:
 (as high a resolution as you can send)
alive.employeesclub.com/lifes-important-moments

- Graduations
- Births
- Weddings
- Military Service
- Special Achievements

In Memoriam

Our thoughts and condolences are with the family and friends of the following current and retired City employees who have passed away.

DEPARTMENT	YEARS OF SERVICE	DEPARTMENT	YEARS OF SERVICE	DEPARTMENT	YEARS OF SERVICE	DEPARTMENT	YEARS OF SERVICE
Active		Carvin, Charles	DWP 27	Lovett, Major	N/D N/D	Sinohue, Sally	LAPD 32
Beaulieu, Benoit	Bldg. & Safety 19	Cascone, Louis	Gen. Services 31	Madsen, Rodney	DWP 25	Solem, Gary	Bldg. & Safety 22
Cullen, William	City Attorney 42	Childers, David	DWP 40	Malin, David	Harbor 33	Smith, Louis	N/D N/D
Erllich, Matthew	Rec and Parks 12	Cummings, George	DWP 38	Marquez, Juan	Gen. Services 31	Smith, Paul	N/D N/D
Hines, William	Gen. Services 30	Dallas, Sidney	N/D N/D	Martinez, Jose	DWP 30	Stapp, Dorothy	DWP 17
Hsu, Roger	Public Works 16	Dobrenz, Gary	DWP 21	Martinez, Marcelino	N/D N/D	Switzer, Kevin	DWP 29
Lemons Murray, Antonio	Personnel 39	Drossel, Lowell	N/D N/D	Newborn, James	N/D N/D	Tamayo, Mac	Gen. Services 27
Macias, Rafael	Transportation 9	Emerson, Robert	DWP 32	Niles, Laurence	N/D N/D	Terrazas, Ernest	N/D N/D
Okuda, Linda	Library 35	Esqueda Sr., David	DWP 18	Nutting, Richard	DWP 32	Testa, Barbara	N/D N/D
Sutton, Maurice	Rec and Parks 16	Evans, Renus	DWP 30	Parker, James	DWP 32	Tolbert, Oliver	Gen. Services 36
Villarruel, John	Airports 17	Harris, John	Public Works 21	Pierce, Robert	DWP 31	Torres, Roberto	N/D N/D
		Harris, Paul	LAFD 25	Reed, Jeanne	N/D N/D	Valdez, Raymond	Gen. Services 27
Retired		Harris, Timothy	Animal Services 10	Remy, Raymond	N/D N/D	Washington, L.G.	DWP 31
Adams, Nick	Gen. Services 23	Hedges, Gary	DWP 31	Rhynes, Marshall	DWP 26	White, Gwendolyn	N/D N/D
Aguilar, Arturo	DWP 38	Hellman, Charles	DWP 33	Riddle, Robert	DWP 30	Winkler, Robert	DWP 38
Baldovino, Mayorico	Finance 24	Hernandez, Victor	DWP 33	Santiso, PE	N/D N/D	Zawrotney, Robert	N/D N/D
Bateman, Floyd	Harbor 16	Houlette, Kenneth	DWP 22	Shores, James	Bldg. & Safety 22		
Beabraut, Ivan	Gen. Services 12	Hughes, Thomas	Public Works 31	Simon, Albert	DWP 26		
Benson, Duane	DWP 26	Jacklich, George	N/D N/D				
Blancett, John	DWP 17	Johnson, William	N/D N/D				
Bratcher, James	Airports 15	Kato, Edward	DWP 41				
Brown, Robert	DWP 26	Katz, Charlotte	DWP 35				
Bruns, Paul	DWP 36	Kennedy, James	DWP 27				
Bui, Howard	Rec and Parks 17	Kinloch, James	Rec and Parks 13				
Burnham, James	DWP 32	Kopp, Randall	Bldg. & Safety 24				
Campbell, Paula	Airports 15	Kirkland, Louis	DWP 33				
Campbell, Shirley	Public Works 10	Linson, Leonard	N/D N/D				
Campbell, Shirley	DWP 3	Locke, Wauphis	N/D N/D				
Carrico, Phillip	N/D N/D	Loredo, Marie	N/D N/D				

N/D = not disclosed

Tell Their Story

Every month, *Alive!* publishes the names of those current or retired City Employees who have died.

But who were they? Did you know them? If you worked with any of these people, knew a story or two about them or were related to them, consider writing to *Alive!* and letting us know. *Tell their story!*

- Write a few sentences or paragraphs
- Send in a photo, if you have one
- Let us know your name and connection to the deceased
- Send your memories to: talkback@cityemployeesclub.com.
Subject line: *Tell Their Story*

WIN

\$50

Target Gift Card

Deadline
For submission:

March 12, 2020

Look for winners on
Web *Alive!* in April:

alive.employeesclub.com

It's a Coloring Contest!

for Adults!



GROWN-UPS, GET YOUR CRAYONS OUT!

It's time for another Grown-up Coloring Contest! Why let your kids have all the fun? The prize: a \$50 Target gift card. So get out your crayons, sparkles and whatnot, and get going!

PLEASE COMPLETE:

Name: _____

Job title and department with the City: _____

Address _____

City/State/Zip: _____

PLEASE PROVIDE →

Club Membership Number:

Send Entries to:

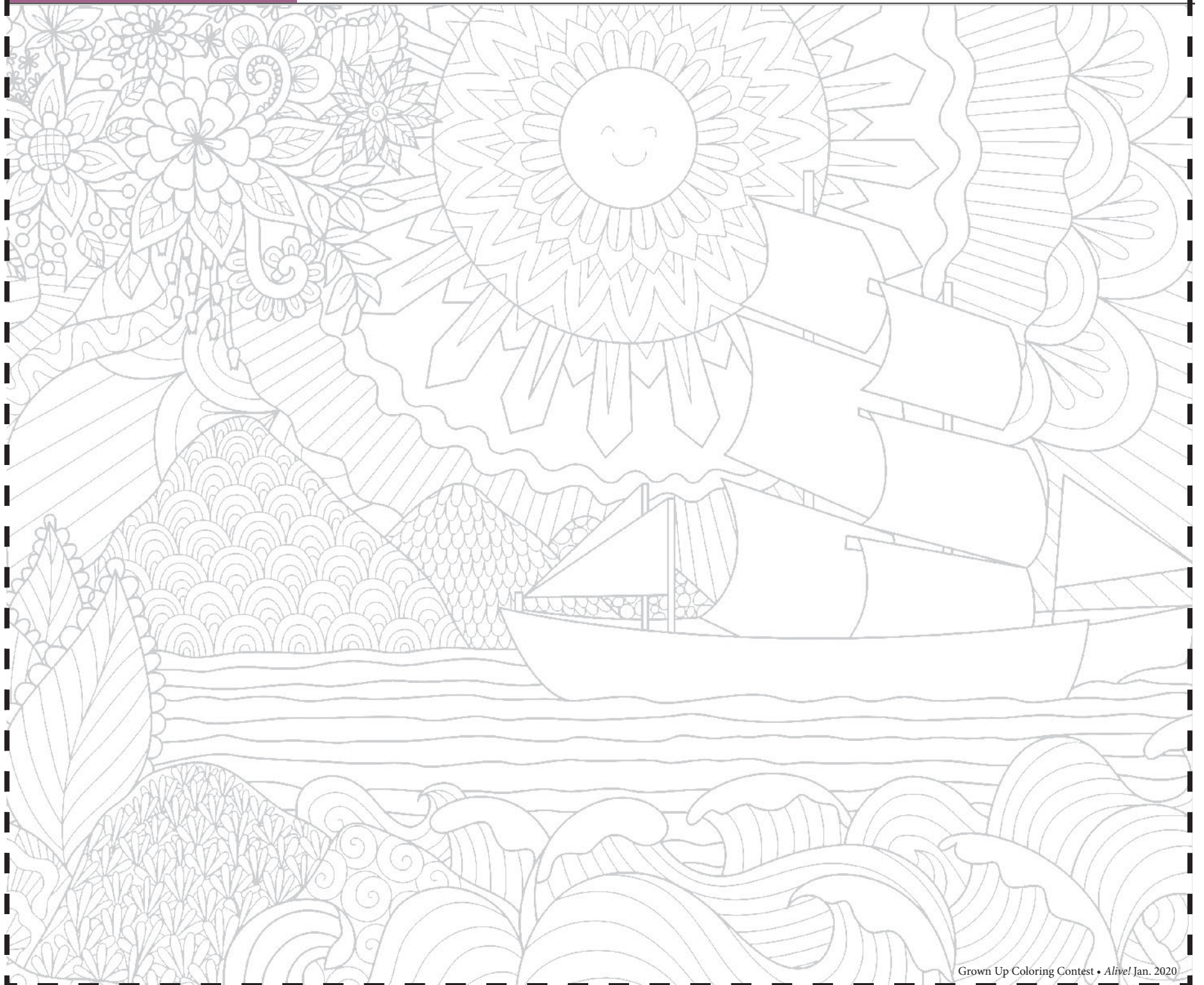
Club Grown-Up Coloring Contest
Employees Club of California
120 West 2nd Street
Los Angeles, CA 90012

Rules of the Club's Adult Coloring Contest:

- Winning contestants must be Club Members in good standing. Everyone is welcome to submit responses, however. (Responses without Club Membership numbers will be accepted but not eligible for the winning prize.)
- All responses must be completed by the person indicated: no ringers (including your children!).
- Winning responses will be determined by official Club personnel. All decisions will be final.
- The contest is all in good fun: The Club cannot be responsible for delays in delivering *Alive!*, or for delays in the transmission of responses.

**Download Coloring Art
From the Web**

You can download and print art from *Alive!* on the web:
alive.employeesclub.com/coloring-contest-for-adults



Photos by Summy Lam, Club Director of Marketing



THE CLUB

Club Takes a Mulligan!

Clubfest returns for exclusive party at Mulligan in Torrance.

On Jan. 19, hundreds of Club Members and their families came together for the return of Clubfest, as the Club took over the Mulligan Family Fun Center in Torrance.

The afternoon featured lunch buffet, bumper cars, go-karts, laser tag, a rock wall, miniature golf, batting cages, arcade games, prizes and more.

Of course the Club on Wheels team was there with great Club apparel, gifts and tickets.

Did you miss the event? Make sure you've signed up for Club email deals and offers. Sign up on the Club Website: employeesclub.com
See you next time!



Julie Briones, City Attorney's Office, 20 years of City service, and family.



Nicki Piepers, Zoo, 17 years of City service.



Della Lyde (right), Retired, Transportation, and Ira Stars, Retired, Transportation.



Dorthea Logan, LAUSD, 2 years of School service, and Terry Duplessis (in goggles), Transportation, 4 months of City service



Ruben Vergara, DWP, 2 years of City service, and family.



Linda Aparicio, LACERS, 16 years of City service, and family.

**FOR ACTIVELY WORKING
LOS ANGELES CITY EMPLOYEES**

(PRE) RETIREMENT 2020 EXPO

**LEARN HOW TO HAVE A HAPPIER
AND MORE ENJOYABLE RETIREMENT!**

MARCH 19

**SEE
PAGE 8**



LAFD

Photo courtesy LAFD

Chief Terrazas joins FS 20 on Christmas Day.

LAFD Chief Ralph Terrazas turned in his white Chief's helmet for an orange Task Force Commander helmet as he worked the Christmas holiday. He joined the squad at FS 20 in Echo Park. Well done, Chief!

Chief Ralph Terrazas (dark shirt) at the Firefighters at FS 20 in Echo Park.



JEWELRY

EXCLUSIVE DISCOUNT

66% OFF

SUGGESTED RETAIL PRICE

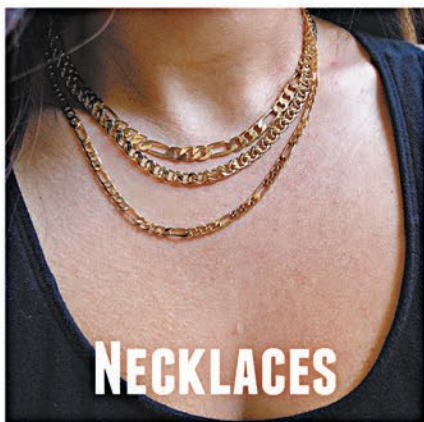


CLUB MEMBER EXCLUSIVE SHOPPING

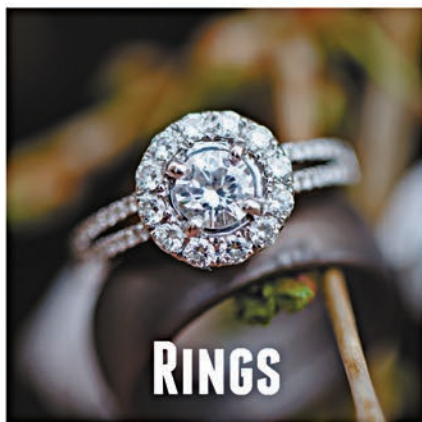
FREE SHIPPING ON ALL JEWELRY ORDERS

SHOP NOW - PAY LATER

Payroll Deduct Your Jewelry Purchases Over 12 Months



NECKLACES



RINGS



BRACELETS



EARRINGS & MORE

MEMBERS - ONLY



CUSTOM MADE JEWELRY AVAILABLE



Corporate Jewelers
An Employees Club of California Payroll Benefit



✓ NO CREDIT CHECK ✓ NO INTEREST PAYMENTS ✓ NO FEES ✓ 30-DAYS RETURN

Here's How It Works:

- Register online and start shopping.
- Make zero payments today.
- Payroll deduct your purchase with zero interest.
- Make equal installments over 12 months.



EmployeesClub.com